

**SANYO**

No. 4701A

**LC33864P-80, M-70/80/10**

**512 K (65536 words × 8 bits) Pseudo-SRAM**

**Overview**

The LC33864 series is composed of pseudo static RAM that operate on a single 5 V power supply and is organized as 65536 words × 8 bits. By using memory cells each composed of a single transistor and capacitor, together with peripheral CMOS circuitry, this series achieves ease of use with high density, high speed, and low power dissipation. Since the LC33864 series products provide refresh counter and timer on chip, this series can easily accomplish auto-refresh and self-refresh by means of  $\overline{\text{RFSH}}$  input. The available packages are the 32-pin DIP with a width of 600 mil, and the 32-pin SOP with a width of 525 mil.

**Features**

- 65536 words × 8 bits configuration
- $\overline{\text{CE}}$  access time/ $\overline{\text{OE}}$  access time/Cycle time/Operating supply current/Self-refresh current.

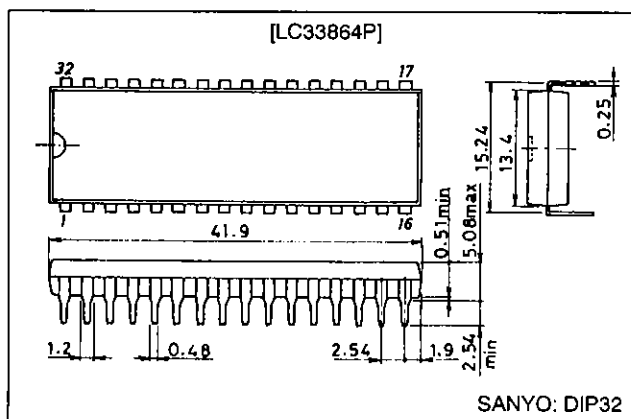
Parameter	LC33864P, M		
	-70	-80	-10
$\overline{\text{CE}}$ access time	70 ns	80 ns	100 ns
$\overline{\text{OE}}$ access time	30 ns	35 ns	40 ns
Cycle time	115 ns	130 ns	160 ns
Operating supply current	80 mA	70 mA	60 mA
Self-refresh current	1 mA		

- Single 5 V ±10% power supply
- All inputs and outputs (I/O) TTL compatible
- Fast access time and low power dissipation
- 8 ms refresh using 512 refresh cycles
- Supports auto-refresh, self-refresh and  $\overline{\text{CE}}$ -only refresh
- Packages  
 DIP 32-pin (600 mil) plastic package: LC33864P  
 SOP 32-pin (525 mil) plastic package: LC33864M

**Package Dimensions**

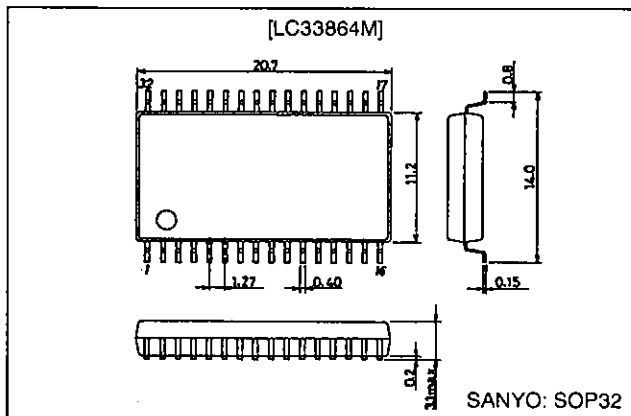
unit: mm

**3192-DIP32**

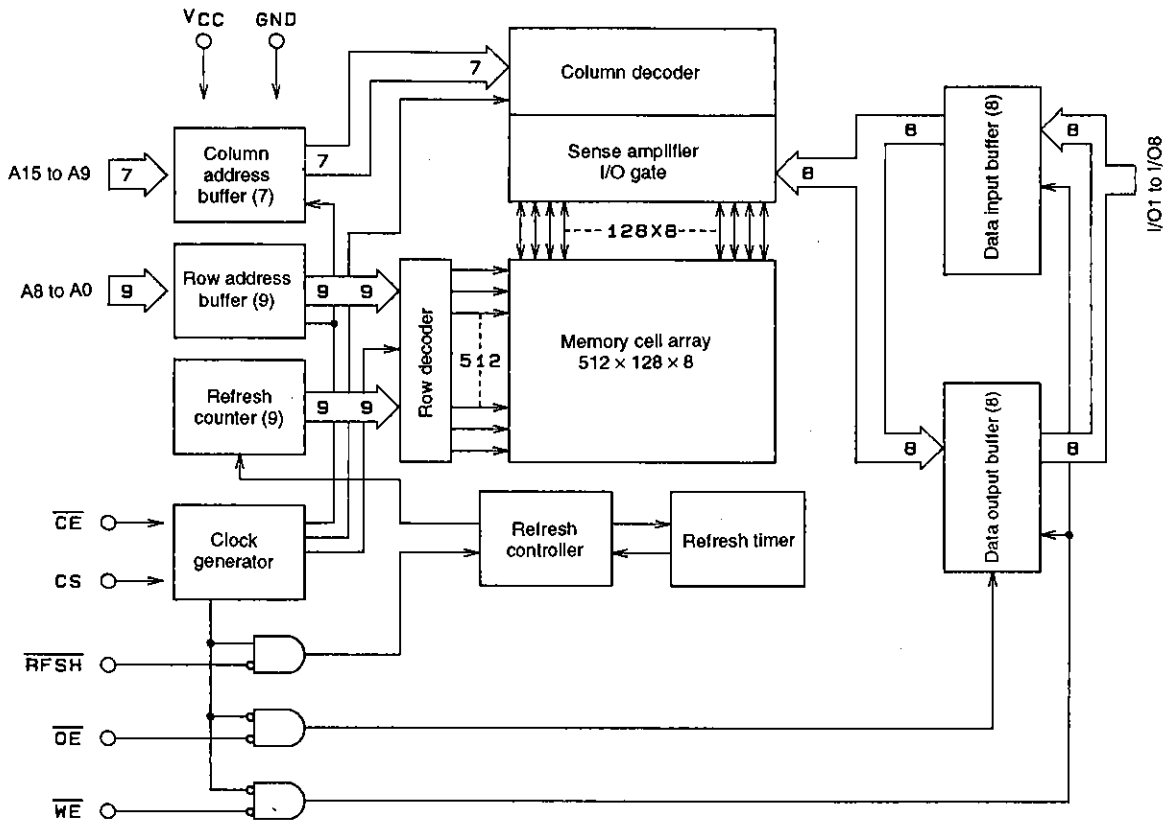


unit: mm

**3205-SOP32**

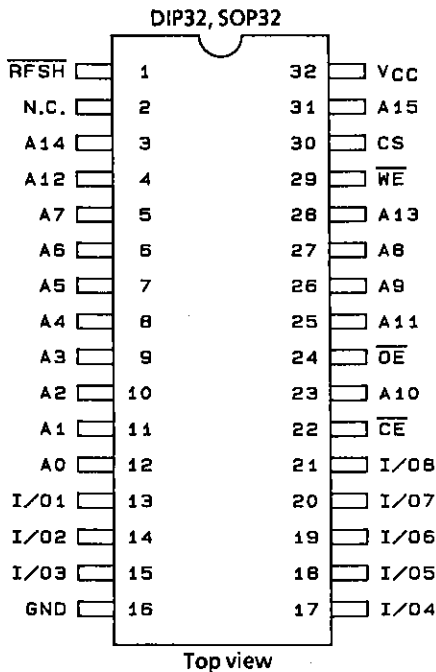


Block Diagram



A01871

Pin Assignment



A01872

Pin Functions

A0 to A15	Address Input
$\overline{WE}$	Read/write Input
$\overline{OE}$	Output enable Input
RFSH	Refresh Input
$\overline{CE}$	Chip enable Input
$\overline{CS}$	Chip select Input
I/O1 to I/O8	Data input/output
Vcc	Power supply
GND	Ground

**Function Logic**

$\overline{CE}$	CS	$\overline{OE}$	$\overline{WE}$	$\overline{RFSH}$	A0 to A8	A9 to A15	I/O1 to I/O8	State
L	H	L	H	X	VX	VX	OUT	Read
L	H	X	L	X	VX	VX	IN	Write
L	H	H	H	X	VX	X	HZ	$\overline{CE}$ only refresh
L	L	X	X	X	X	X	HZ	CS standby
H	X	X	X	L	X	X	HZ	Self-refresh
H	X	X	X	NP	X	X	HZ	Auto-refresh
H	X	X	X	H	X	X	HZ	Standby

H: High-level input of  $V_{IN} = 6.5\text{ V}$  to  $V_{IH}(\text{min})$   
 L: Low-level input of  $V_{IN} = V_{IL}(\text{max})$  to  $-1.0\text{ V}$   
 NP: Negative-polarity pulse input  
 X: High- or Low-level input  
 VX: "IN" when  $\overline{CE} = L$  is confirmed, then "X"  
 HZ: High impedance  
 IN: Input state  
 OUT: Output state

**Specifications**

**Absolute Maximum Ratings**

Parameter	Symbol	Ratings	Unit	Note
Maximum supply voltage	$V_{CC\text{ max}}$	-1.0 to +7.0	V	1
Input voltage	$V_{IN}$	-1.0 to +7.0	V	1
Output voltage	$V_{OUT}$	-1.0 to +7.0	V	1
Allowable power dissipation	$Pd\text{ max}$	600	mW	1
Output short current	$I_{OUT}$	50	mA	1
Operating temperature range	$T_{opr}$	0 to +70	°C	1
Storage temperature range	$T_{stg}$	-55 to +150	°C	1

Note: 1. Stresses greater than the above listed maximum values may result in damage to the device.

**DC Recommended Operating Ranges at  $T_a = 0$  to +70°C**

Parameter	Symbol	min	typ	max	Unit	Note
Power supply voltage	$V_{CC}$	4.5	5.0	5.5	V	2
Input high level voltage	$V_{IH}$	2.4		6.5	V	2
Input low level voltage	$V_{IL}$	-1.0		+0.8	V	2

Note: 2. All voltages are referenced to GND.

## LC33864P-80, M-70/80/10

### DC Electrical Characteristics at $T_a = 0$ to $+70^\circ\text{C}$ , $V_{CC} = 5\text{ V} \pm 10\%$

Parameter	Symbol	Conditions		min	max	Unit	Note
		$t_{RC} = t_{RC}(\text{min})$	Access time				
Operating current (average current during operation)	$I_{CCA}$			70 ns	80	mA	3, 4
				80 ns	70		
				100 ns	60		
Standby current 1	$I_{CCS1}$	$\overline{CE} = \overline{RFSH} = V_{IH}$			2	mA	
Standby current 2	$I_{CCS2}$	$\overline{CE} = \overline{RFSH} = V_{CC} - 0.2\text{ V}$			1	mA	
Self-refresh current 1 (average current)	$I_{CCF1}$	$\overline{CE} = V_{IH}, \overline{RFSH} = V_{IL}$			2	mA	
Self-refresh current 2 (average current)	$I_{CCF2}$	$\overline{CE} = V_{CC} - 0.2\text{ V}, \overline{RFSH} = 0.2\text{ V}$			1	mA	
Input leakage current	$I_{IL}$	$0\text{ V} \leq V_{IN} \leq V_{CC}$ , pins other than measuring pin = $0\text{ V}$		-10	+10	$\mu\text{A}$	
Output leakage current	$I_{OL}$	Output disable, $0\text{ V} \leq V_{OUT} \leq V_{CC}$		-10	+10	$\mu\text{A}$	
Output high level voltage	$V_{OH}$	$I_{OH} = -1\text{ mA}$		2.4		V	
Output low level voltage	$V_{OL}$	$I_{OL} = 2.1\text{ mA}$			0.4	V	

Notes: 3. All current values are measured at minimum cycle rate. Since current flows immoderately, if cycle time is longer than shown here, current value becomes smaller. A bypass capacitor of  $0.01\ \mu\text{F}$  or larger should be inserted between  $V_{CC}$  and GND for each memory chip to suppress power supply noise (voltage drops) due to transient currents.

4. Dependent on output load. Maximum value is value during free state.

### Input/Output Capacitance at $T_a = 25^\circ\text{C}$ , $V_{CC} = 5\text{ V} \pm 10\%$ , $f = 1\text{ MHz}$

Parameter	Symbol	min	max	Unit
Input capacitance (A0 to A15)	$C_{I1}$		5	pF
Input capacitance ( $\overline{CE}$ , CS, $\overline{OE}$ , $\overline{RFSH}$ and $\overline{WE}$ )	$C_{I2}$		7	pF
I/O capacitance	$C_{I/O}$		10	pF

Sampling inspections, and not full-lot inspections, are carried out for these parameters.

### AC Electrical Characteristics at $T_a = 0$ to $+70^\circ\text{C}$ , $V_{CC} = 5\text{ V} \pm 10\%$ (Notes 5, 6, 7, 8, 9.)

Parameter	Symbol	-70		-80		-100		Unit	Note
		min	max	min	max	min	max		
Random read or write cycle time	$t_{RC}$	115		130		160		ns	
Read-modify-write cycle time	$t_{RMW}$	165		195		235		ns	
$\overline{CE}$ pulse width	$t_{CE}$	70	10000	80	10000	100	10000	ns	
$\overline{CE}$ precharge time	$t_p$	35		40		50		ns	
$\overline{CE}$ access time	$t_{CEA}$		70		80		100	ns	
$\overline{OE}$ access time	$t_{OEA}$		30		35		40	ns	
$\overline{CE}$ output enable time	$t_{CLZ}$	20		25		30		ns	
$\overline{OE}$ output enable time	$t_{OLZ}$	0		0		0		ns	
$\overline{WE}$ output enable time	$t_{WLZ}$	0		0		0		ns	
$\overline{CE}$ output disable time	$t_{CHZ}$	0	20	0	25	0	30	ns	9
$\overline{OE}$ output disable time	$t_{OHZ}$	0	20	0	25	0	30	ns	9
$\overline{WE}$ output disable time	$t_{WHZ}$	0	20	0	25	0	30	ns	9
$\overline{OE}$ disable setup time	$t_{ODS}$	0		0		0		ns	
$\overline{OE}$ disable hold time	$t_{ODH}$	10		10		10		ns	
Read command setup time	$t_{RCS}$	0		0		0		ns	
Read command hold time	$t_{RCH}$	0		0		0		ns	
Chip select setup time	$t_{CSS}$	0		0		0		ns	
Chip select hold time	$t_{CSH}$	15		20		25		ns	
Write pulse width	$t_{WP}$	55		60		70		ns	
Write command hold time	$t_{WCH}$	55	10000	60	10000	70	10000	ns	
Write command lead time	$t_{CWL}$	55	10000	60	10000	70	10000	ns	
Input data setup time for $\overline{WE}$	$t_{DSW}$	30		35		40		ns	10
Input data setup time for $\overline{CE}$	$t_{DSC}$	30		35		40		ns	10

Continued on next page.

LC33864P-80, M-70/80/10

Continued from preceding page.

Parameter	Symbol	-70		-80		-100		Unit	Note
		min	max	min	max	min	max		
Input data hold time for $\overline{WE}$	$t_{DHW}$	0		0		0		ns	10
Input data hold time for $\overline{CE}$	$t_{DHC}$	0		0		0		ns	10
Address setup time for $\overline{CE}$	$t_{ASC}$	0		0		0		ns	11
Address hold time for $\overline{CE}$	$t_{AHC}$	15		20		25		ns	11
Refresh command hold time	$t_{RHC}$	15		15		15		ns	
Auto-refresh cycle time	$t_{FC}$	115		130		160		ns	
RFSH delay time for $\overline{CE}$	$t_{RFD}$	35		40		50		ns	
RFSH pulse width (auto-refresh)	$t_{FAP}$	35	8000	40	8000	50	8000	ns	12
RFSH precharge time (auto-refresh)	$t_{FP}$	30		30		30		ns	12
RFSH pulse width (self-refresh)	$t_{FAS}$	8000		8000		8000		ns	12
RFSH precharge $\overline{CE}$ delay time (self-refresh)	$t_{FRS}$	135		160		190		ns	12
Refresh time (512 cycles, A0 to A8)	$t_{REF}$		8		8		8	ms	
Rise or fall times	$t_T$	3	50	3	50	3	50	ns	

Note: 5. To accomplish internal initialization,  $\overline{CE}$  is fixed at  $V_{IH}$  for an interval of 100  $\mu$ s when  $V_{CC}$  reaches the specified voltage after power is switched on. At least eight cycles must be executed following that period.

6. Measured at  $t_T = 5$  ns.

7. When measuring input signal timing,  $V_{IH}$  (min) and  $V_{IL}$  (max) are reference levels.

8. Measured using an equivalent of 100 pF and two standard TTL loads.

9.  $t_{CHZ}$ ,  $t_{OHZ}$  and  $t_{WHZ}$  are defined as the time until output enters the open circuit state and the output voltage level becomes immeasurable.

10. As with ordinary static RAM, write data is incorporated at the rise of  $\overline{WE}$  input or  $\overline{CE}$  input, whichever is earlier, and write data is therefore held during  $t_{psw}$ ,  $t_{DSC}$ ,  $t_{DHW}$ , or  $t_{DHC}$ .

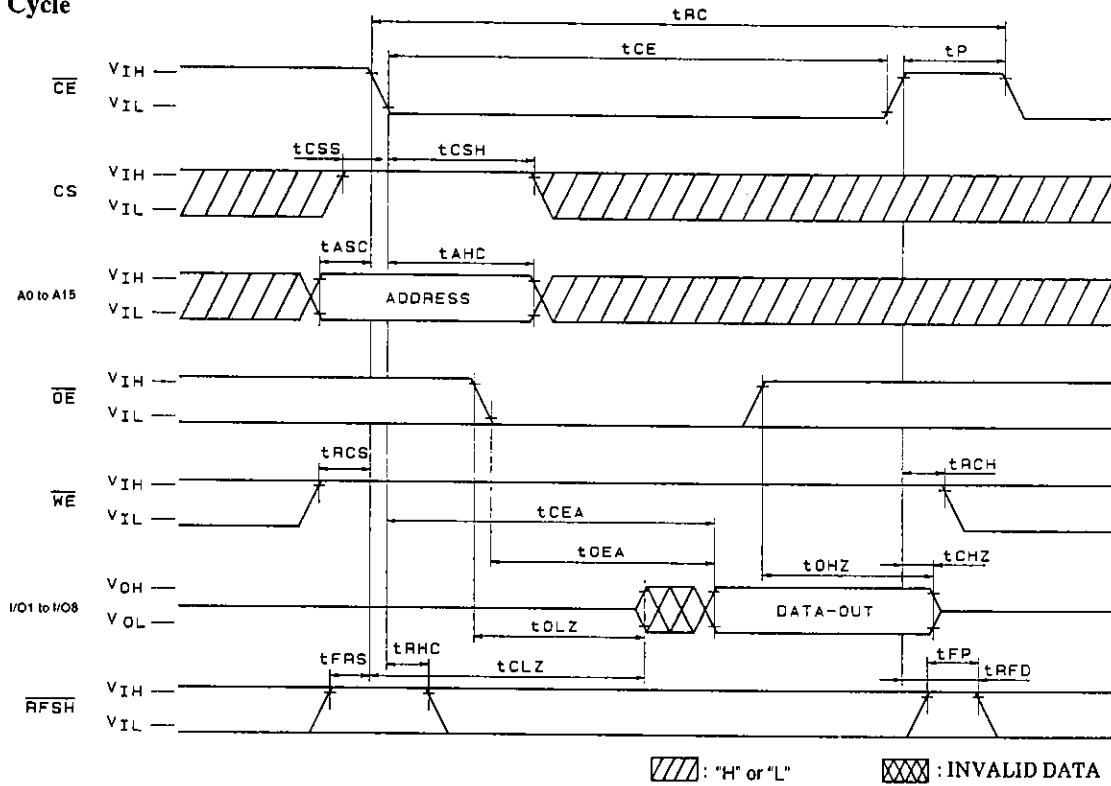
11. Because address input is incorporated at the fall of  $\overline{CE}$ , the address is maintained during  $t_{ASC}$  or  $t_{AHC}$ .

12. Auto-refresh and self-refresh are determined by RFSH pulse width when  $\overline{CE} = V_{IH}$ , and are defined as auto-refresh when below  $t_{FAP}$  (max), or as self-refresh when above  $t_{FAS}$  (min). In order to activate  $\overline{CE}$  after the completion of each refresh,  $t_{FCE}$  must be assured for auto-refresh, or  $t_{FRS}$  must be assured for self-refresh.

Similarly, if self-refresh timing (RFSH = Low) is used after power is switched on,  $t_{FRS}$  must be assured.

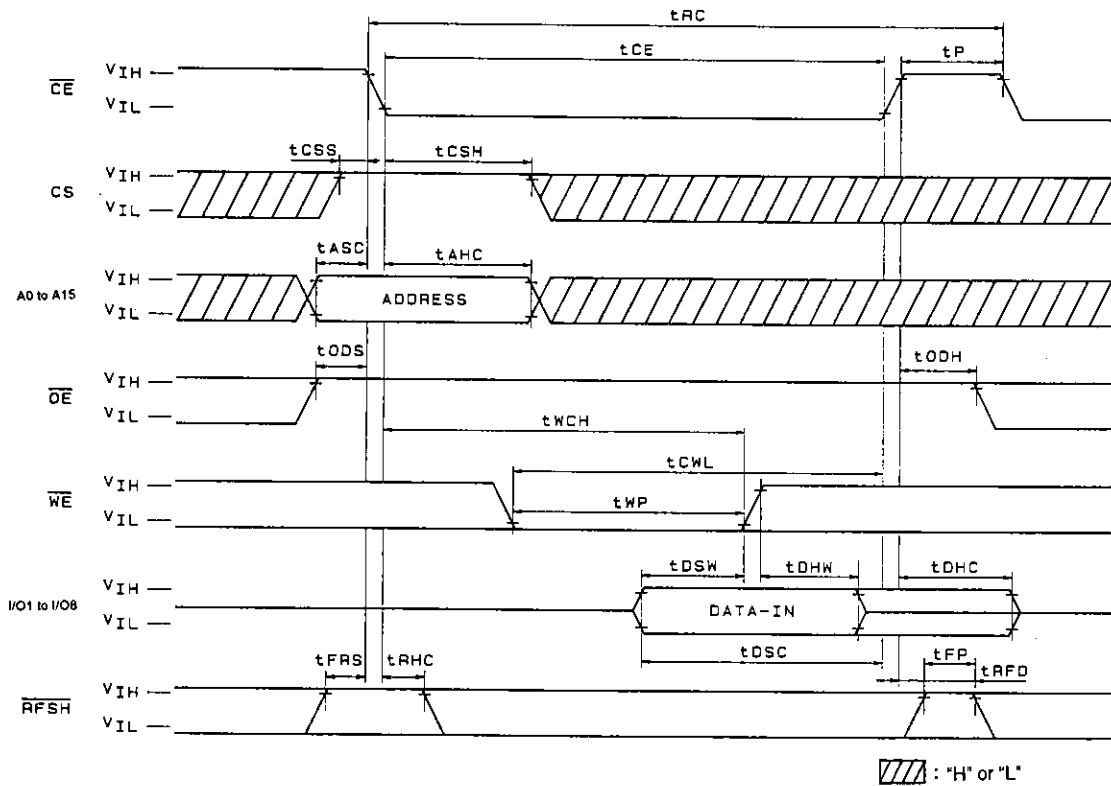
Timing Chart

Read Cycle



A01873

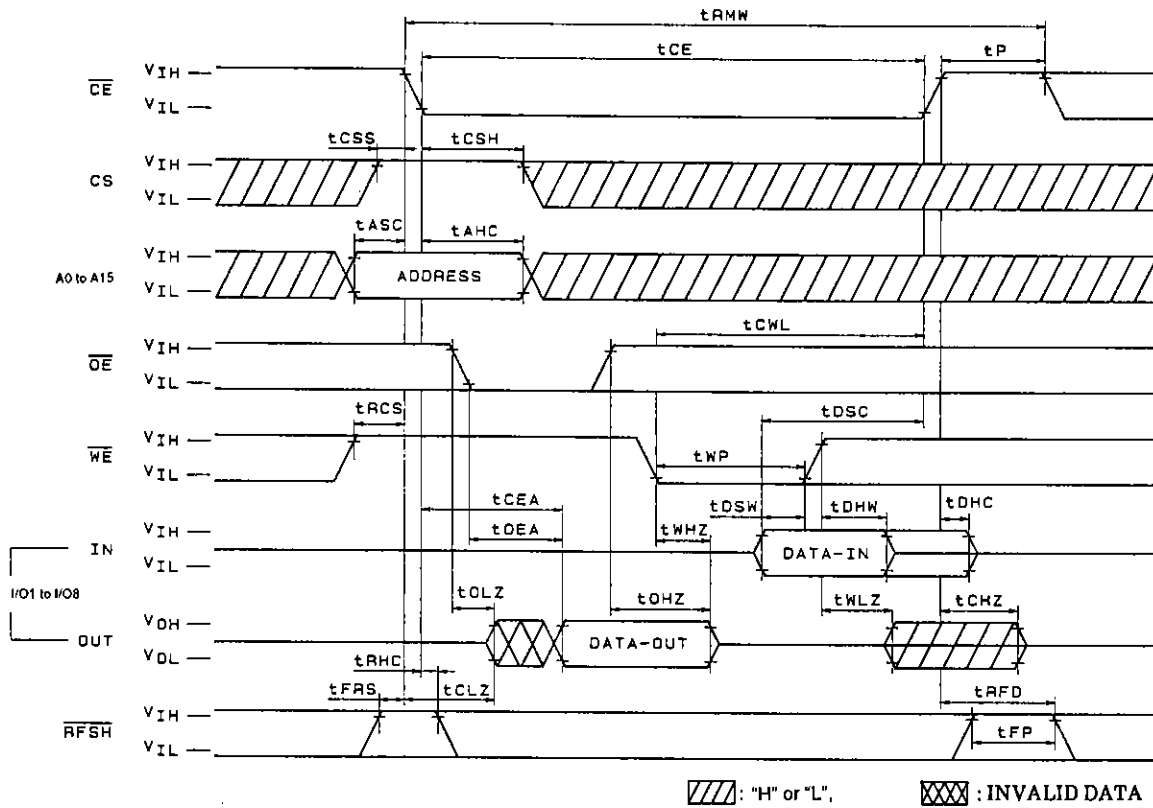
Write Cycle 1 (OE Fix High)



A01874

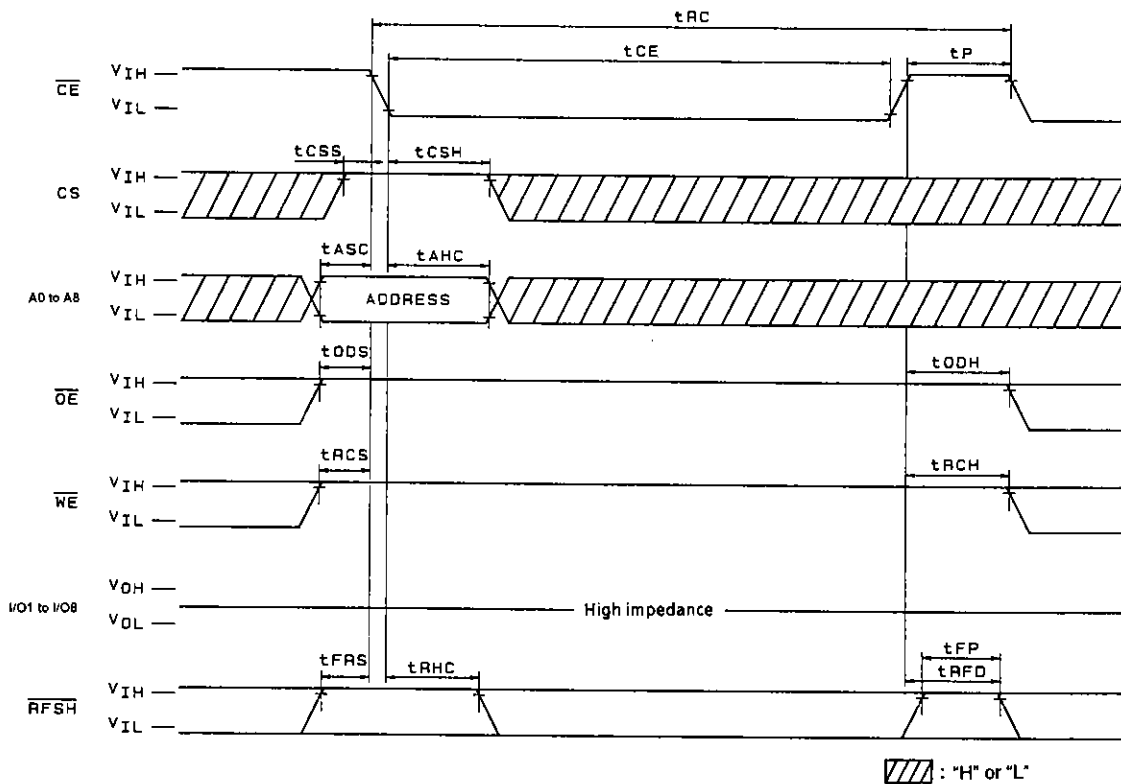


Read-Modify-Write Cycle



A01877

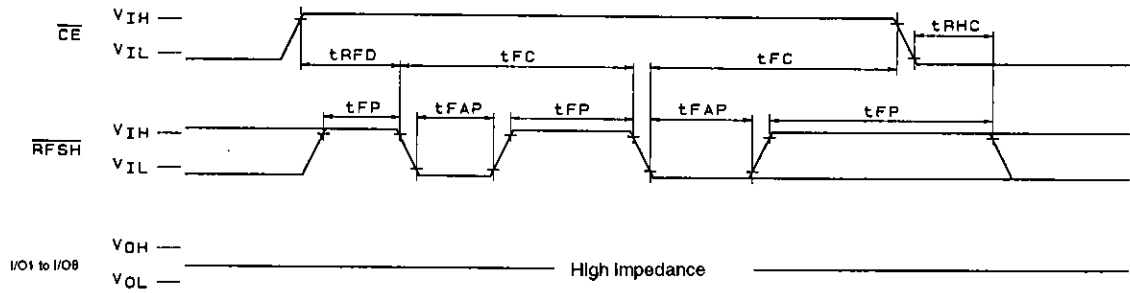
$\overline{CE}$ -Only Refresh



A01878



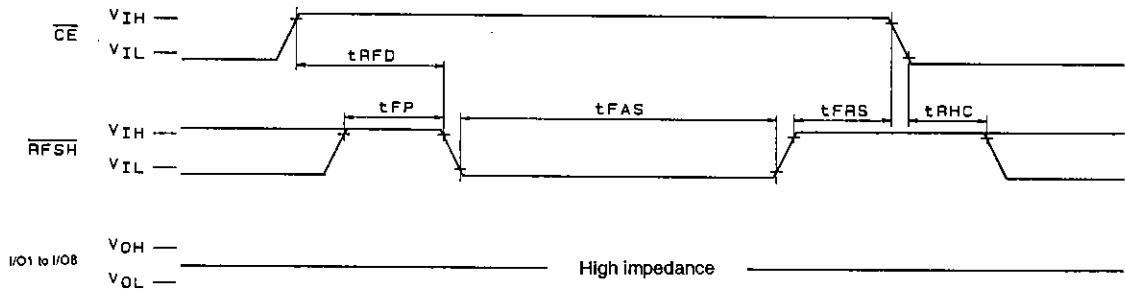
**RFSH Auto-Refresh**



Note: CS,  $\overline{OE}$ ,  $\overline{WE}$ , A0 to A15: "H" or "L"

A01879

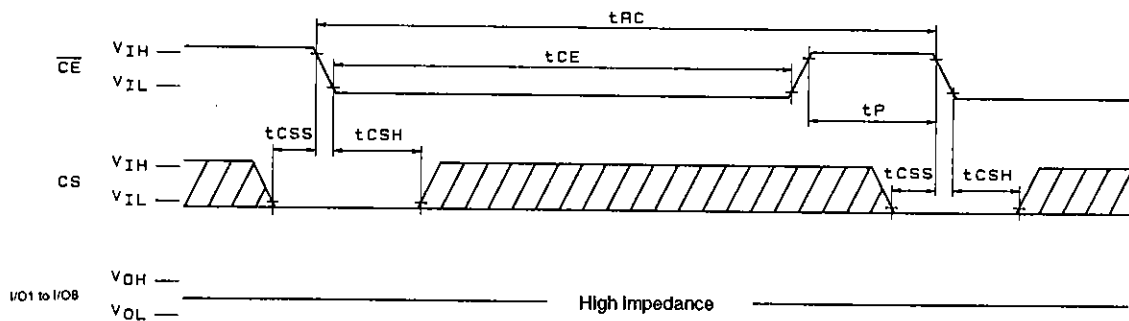
**Self-Refresh**



Note: CS,  $\overline{OE}$ ,  $\overline{WE}$ , A0 to A15: "H" or "L"

A01880

**CS Standby Mode**



Note:  $\overline{OE}$ ,  $\overline{WE}$ , A0 to A15: "H" or "L"

▨ : "H" or "L"

A01881

- No products described or contained herein are intended for use in surgical implants, life-support systems, aerospace equipment, nuclear power control systems, vehicles, disaster/crime-prevention equipment and the like, the failure of which may directly or indirectly cause injury, death or property loss.
- Anyone purchasing any products described or contained herein for an above-mentioned use shall:
  - ① Accept full responsibility and indemnify and defend SANYO ELECTRIC CO., LTD., its affiliates, subsidiaries and distributors and all their officers and employees, jointly and severally, against any and all claims and litigation and all damages, cost and expenses associated with such use:
  - ② Not impose any responsibility for any fault or negligence which may be cited in any such claim or litigation on SANYO ELECTRIC CO., LTD., its affiliates, subsidiaries and distributors or any of their officers and employees jointly or severally.
- Information (including circuit diagrams and circuit parameters) herein is for example only; it is not guaranteed for volume production. SANYO believes information herein is accurate and reliable, but no guarantees are made or implied regarding its use or any infringements of intellectual property rights or other rights of third parties.

This catalog provides information as of June, 1996. Specifications and information herein are subject to change without notice.