

SANYO

NO.886D

LB1256

Printer Driver

The LA1256 is a 7-units driver array, possessing high-current, low-saturating outputs. It has a motor driver circuit equipped with a brake circuit. It is suited for low-voltage, high-current driver use.

FEATURES

1. Has a large current capacity (400 mA) and a low saturation voltage (0.5 V max.).
2. Has a motor driver with a spark suppressor.
3. Ideal for various battery-operated printer drivers.

ABSOLUTE MAXIMUM RATINGS/T_a = 25°C

				unit
Maximum power supply voltage	V _{CC} max	-0.3 ~ +7.0	V	
Maximum supply voltage	V _{OUT}	-0.3 ~ +10.0	V	
Input supply voltage	V _{IN}	-0.3 ~ +7.0	V	
Maximum output current	I _{OUT}	Per unit: pulse width < 35 ms	400	mA
Maximum forward current	I _{FSM}	Spark suppressor diode	700	mA
		Pulse width < 35 ms, 5% duty		
GND pin flow-out current	I _{GND}	Pulse width < 35 ms	3000	mA
Instantaneous current consumption	I _{CCP}	Pulse width < 35 ms, 5% duty	700	mA
Allowable power dissipation	P _d max	T _a = 55°C	700	mW
Operating temperature	T _{opr}		-20 ~ +75	°C
Storage temperature	T _{stg}		-40 ~ +125	°C

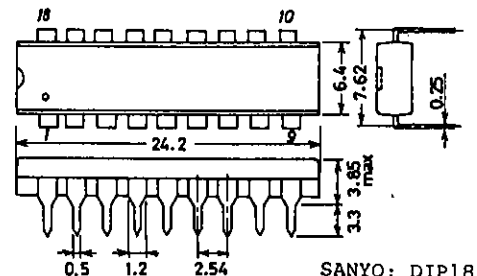
ALLOWABLE OPERATING CONDITIONS/T_a = 25°C

				unit
Supply voltage	V _{CC}	2.0 ~ 6.0	V	
Input H level voltage	V _{IH}	I _{OUT} = 150 mA	2.0 ~ 7.0	V
Input L level voltage	V _{IL}	I _{OUT} = 100 μA	-0.3 ~ +0.7	V

ELECTRICAL CHARACTERISTICS/T_a = 25°C

			min	typ	max	unit
Output voltage	V _{OUT 1}	V _{IN} = 2.0 V, V _{CC} = 2.0 V, I _{OUT} = 150 mA			0.3	V
	V _{OUT 2}	V _{IN} = 3.0 V, V _{CC} = 3.5 V, I _{OUT} = 200 mA			0.25	V
	V _{OUT 3}	V _{IN} = 5.5 V, V _{CC} = 6.0 V, I _{OUT} = 400 mA			0.50	V
Output sustaining voltage	V _{0sus}	V _{IN} : open, I _{OUT} = 400 mA, < 10 μs	10			V

Continued on next page.

Package Dimensions 3007A-D18IC
(unit : mm)

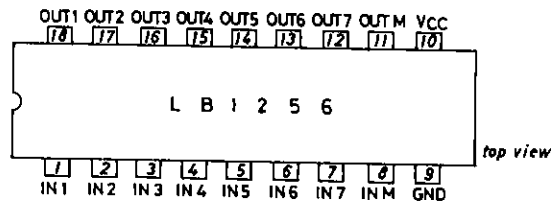
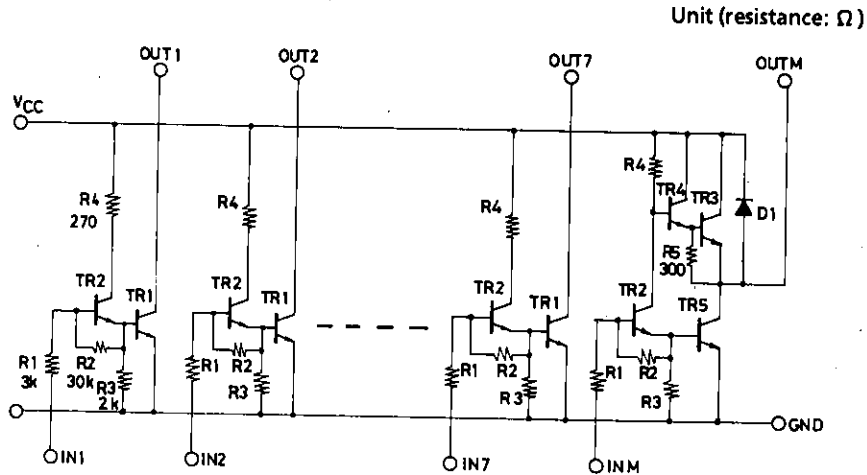
SANYO Electric Co., Ltd. Semiconductor Business Headquarters
TOKYO OFFICE Tokyo Bldg., 1-10, 1 Chome, Ueno, Taito-ku, TOKYO, 110 JAPAN

O3095YK/ 8037KI / 7315KI / 7213KI,TS / 0261 No.886-1/2

Continued from preceding page.

			min	typ	max	unit
Output leakage current	I_{off}	$V_{IN} = 0.7 \text{ V}, V_{CC} = 6 \text{ V}$			100	μA
Input current	I_{IN}	$V_{IN} = 6.0 \text{ V}, I_{OUT} = 0$			2.5	mA
Spark suppressor diode forward voltage	$V_F(s)$	$I_F(s) = 400 \text{ mA}$			3.0	V

EQUIVALENT CIRCUIT AND PIN ASSIGNMENT



■ No products described or contained herein are intended for use in surgical implants, life-support systems, aerospace equipment, nuclear power control systems, vehicles, disaster/crime-prevention equipment and the like, the failure of which may directly or indirectly cause injury, death or property loss.

■ Anyone purchasing any products described or contained herein for an above-mentioned use shall:

- ① Accept full responsibility and indemnify and defend SANYO ELECTRIC CO., LTD., its affiliates, subsidiaries and distributors and all their officers and employees, jointly and severally, against any and all claims and litigation and all damages, cost and expenses associated with such use;
- ② Not impose any responsibility for any fault or negligence which may be cited in any such claim or litigation on SANYO ELECTRIC CO., LTD., its affiliates, subsidiaries and distributors or any of their officers and employees jointly or severally.

■ Information (including circuit diagrams and circuit parameters) herein is for example only; it is not guaranteed for volume production. SANYO believes information herein is accurate and reliable, but no guarantees are made or implied regarding its use or any infringements of intellectual property rights or other rights of third parties.