

●Characteristics

Parameter	Symbol	Typ.	Unit
Effective scanning width	—	216	mm
Primary scan dot density	—	300	DPI
Total dot number	—	2584	dots
Power supply voltage	V _{DD}	5	V
Scanning speed	SLT	2.6	ms / line
Clock frequency	CLK	1	MHz
Maximum dynamic range	VR Max.	2.04	V
Minimum dynamic range	VR Min.	0.68	V
Dark output	V _{od}	0~300	mV
Operating temperature	—	5~45	°C

●Pin assignments

No.	Circuit	I / O	Functions
1	B-OUT	O	Analog output (B)
2	G-OUT	O	Analog output (G)
3	R-OUT	O	Analog output (R)
4	SI	I	Serial-in
5	GND	I	Ground
6	CLK	I	Clock
7	V _{DD}	I	Power supply

●Timing chart

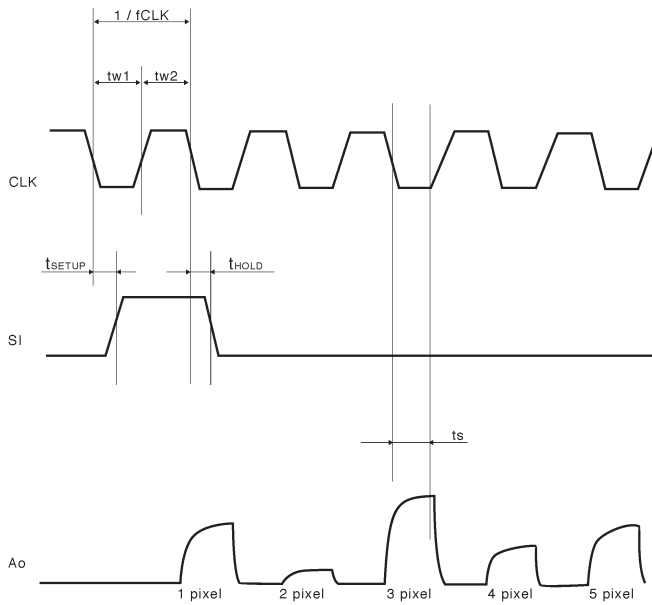


Fig.1

●Equivalent circuit

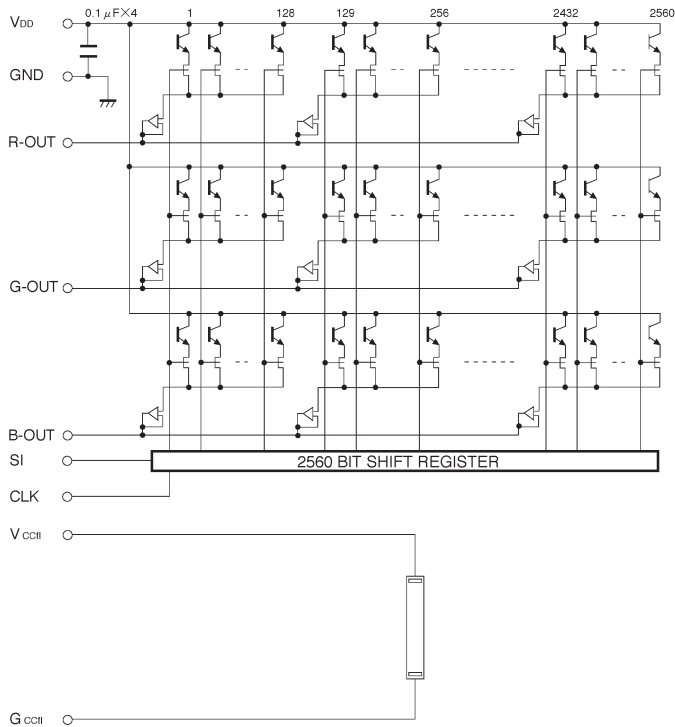


Fig.2