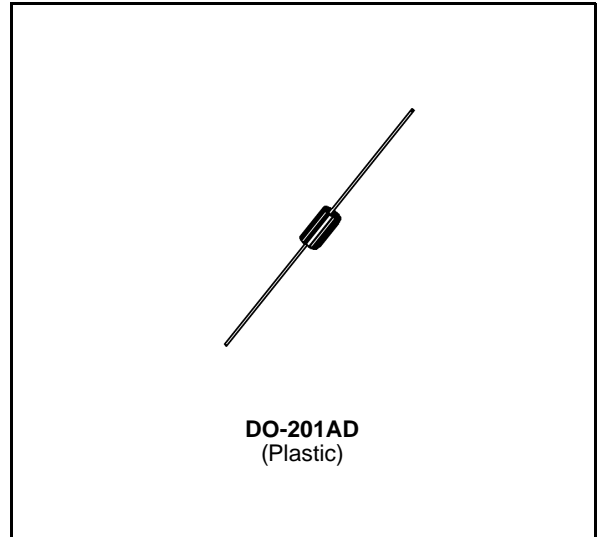




## FAST RECOVERY RECTIFIER DIODES

- SOFT RECOVERY
- VERY HIGH VOLTAGE
- SMALL RECOVERY CHARGE



### APPLICATIONS

- ANTISATURATION DIODES FOR TRANSISTOR BASE DRIVE
- SNUBBER DIODES

### ABSOLUTE MAXIMUM RATINGS (limiting values)

Symbol	Parameter		Value	Unit
$I_{FRM}$	Repetive Peak Forward Current	$t_p \leq 20\mu s$	50	A
$I_{F(AV)}$	Average Forward Current *	$T_a = 55^\circ C$ $\delta = 0.5$	3	A
$I_{FSM}$	Surge non Repetitive Forward Current	$t_p = 10ms$ Sinusoidal	100	A
$P_{tot}$	Power Dissipation *	$T_a = 55^\circ C$	3.75	W
$T_{stg}$ $T_j$	Storage and Junction Temperature Range		- 40 to + 150 - 40 to + 150	$^\circ C$
$T_L$	Maximum Lead Temperature for Soldering during 10s at 4mm from Case		230	$^\circ C$

Symbol	Parameter	BYT 13-			Unit
		600	800	1000	
$V_{RRM}$	Repetitive Peak Reverse Voltage	600	800	1000	V

### THERMAL RESISTANCE

Symbol	Parameter	Value	Unit
$R_{th(j-a)}$	Junction-ambient*	25	$^\circ C/W$

\* On infinite heatsink with 10mm lead length.

**ELECTRICAL CHARACTERISTICS**

STATIC CHARACTERISTICS

Symbol	Test Conditions		Min.	Typ.	Max.	Unit
$I_R$	$T_j = 25^\circ\text{C}$	$V_R = V_{RRM}$			20	$\mu\text{A}$
$V_F$	$T_j = 25^\circ\text{C}$	$I_F = 3\text{A}$			1.3	V

RECOVERY CHARACTERISTICS

Symbol	Test Conditions				Min.	Typ.	Max.	Unit
$t_{rr}$	$T_j = 25^\circ\text{C}$	$I_F = 0.5\text{A}$	$I_R = 1\text{A}$	$I_{rr} = 0.25\text{A}$			150	ns

To evaluate the conduction losses use the following equations:

$$V_F = 0.95 + 0.050 I_F \quad P = 0.95 \times I_{F(AV)} + 0.050 I_{F(RMS)}^2$$

Figure 1. Maximum average power dissipation versus average forward current.

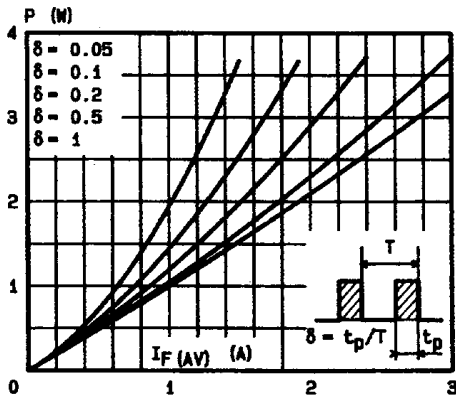


Figure 2. Average forward current versus ambient temperature.

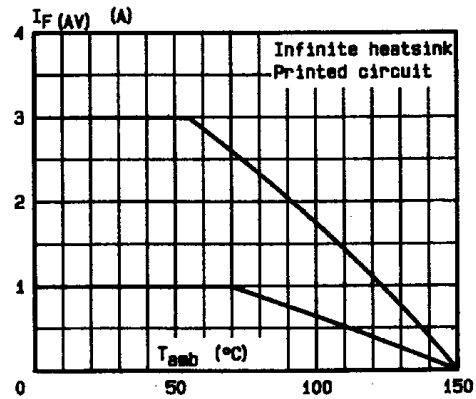
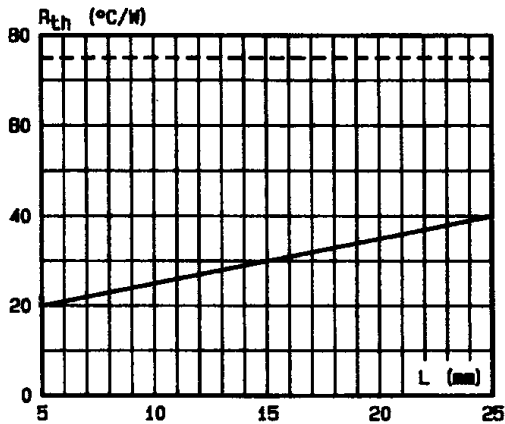


Figure 3. Thermal resistance versus lead length.



Mounting n°1  
INFINITE HEATSINK

Mounting n°2  
PRINTED CIRCUIT

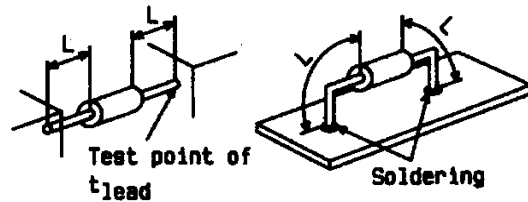


Figure 4. Transient thermal impedance junction-ambient for mounting n°2 versus pulse duration (L = 10 mm).

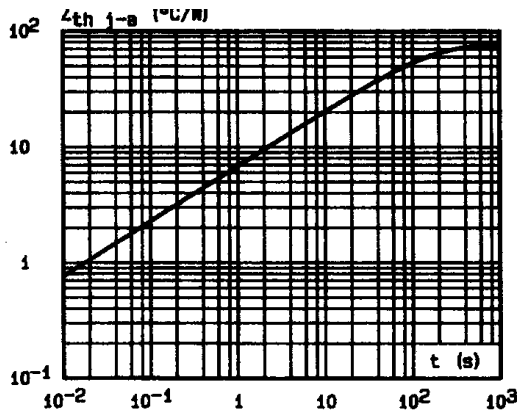


Figure 5. Peak forward current versus peak forward voltage drop (maximum values).

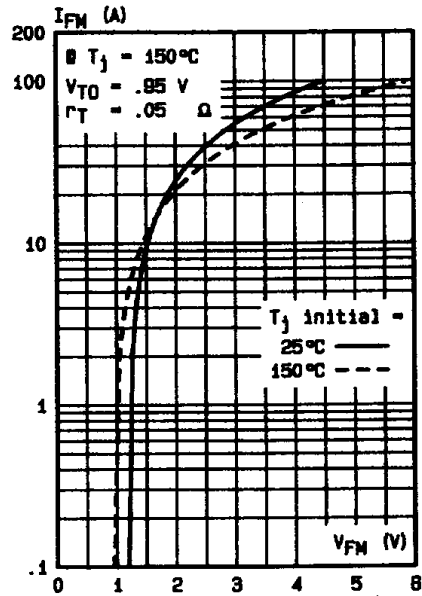


Figure 6. Capacitance versus reverse applied voltage

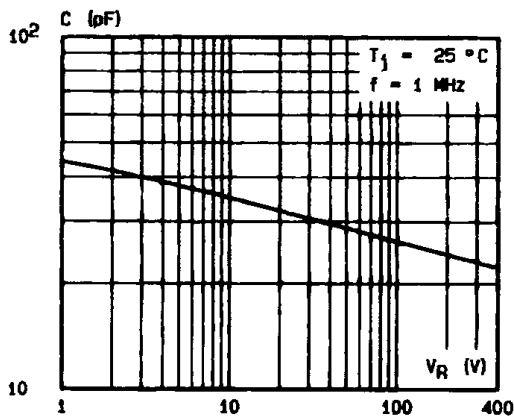
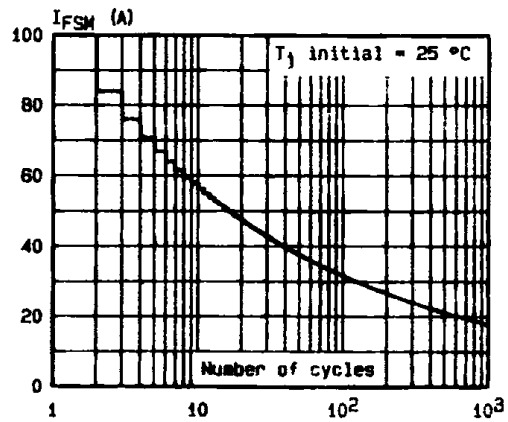
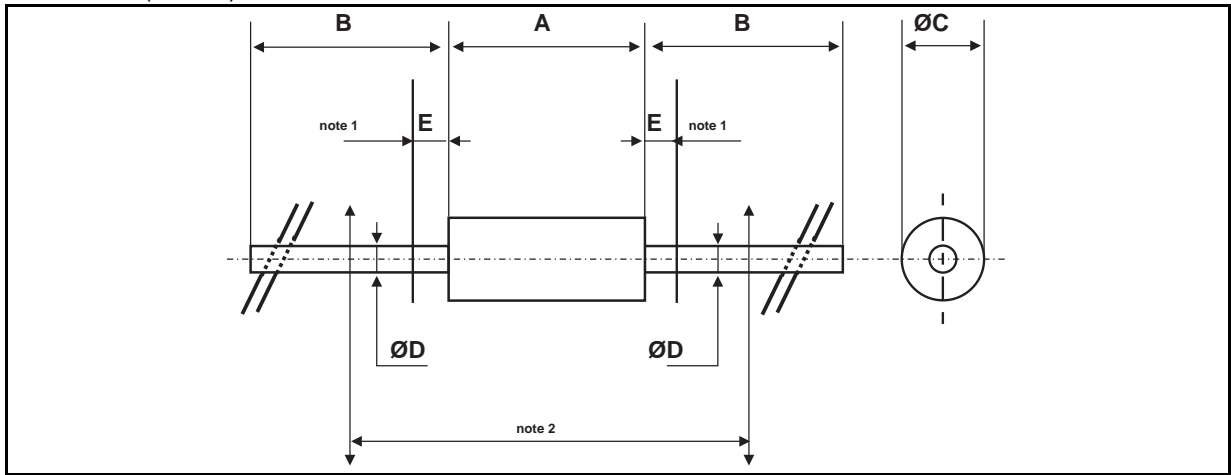


Figure 7. Non repetitive surge peak current versus number of cycles



**PACKAGE MECHANICAL DATA**

DO-201AD (Plastic)



REF.	DIMENSIONS				NOTES
	Millimeters		Inches		
	Min.	Max.	Min.	Max.	
A		9.50		0.374	1 - The lead diameter $\varnothing D$ is not controlled over zone E 2 - The minimum axial length within which the device may be placed with its leads bent at right angles is 0.59"(15 mm)
B	25.40		1.000		
$\varnothing C$		5.30		0.209	
$\varnothing D$		1.30		0.051	
E		1.25		0.049	

- **Marking** : type number, white band indicates cathode
- **Cooling method** : by convection (method A)
- **Weight** : 1.166g

Information furnished is believed to be accurate and reliable. However, STMicroelectronics assumes no responsibility for the consequences of use of such information nor for any infringement of patents or other rights of third parties which may result from its use. No license is granted by implication or otherwise under any patent or patent rights of STMicroelectronics. Specifications mentioned in this publication are subject to change without notice. This publication supersedes and replaces all information previously supplied. STMicroelectronics products are not authorized for use as critical components in life support devices or systems without express written approval of STMicroelectronics.

The ST logo is a registered trademark of STMicroelectronics  
 © 1998 STMicroelectronics - Printed in Italy - All rights reserved.

STMicroelectronics GROUP OF COMPANIES  
 Australia - Brazil - Canada - China - France - Germany - Italy - Japan - Korea - Malaysia - Malta - Mexico - Morocco -  
 The Netherlands - Singapore - Spain - Sweden - Switzerland - Taiwan - Thailand - United Kingdom - U.S.A.