

Solder Reflow Mounting Method for the MRF286 and Similar Packages

Prepared by: Jeanne Pavio and Jerry Mason
Motorola Semiconductor Products Sector

MOUNTING METHOD DESIGN

The following document describes a solder mounting method for the MRF286, 60 Watt power device. This mounting methodology is recommended for any ceramic/metal flange device with similar materials and construction (copper tungsten flange with Alloy 42 leads) and a power range from 20–60 watts. This method was developed after comprehensive simulation which included thermal management and mechanical stress modeling. Assemblies of the new design were then built in an automated solder mount assembly line with device leads solder attached to a PC board and the flange soldered directly to a 0.055 inch thick copper plate. The assemblies were then tested for long term reliability and thermal performance. Reliability tests involved

temperature cycling the assembled boards from -65°C to $+150^{\circ}\text{C}$ at a ten minute dwell with less than a half minute between cycles. Devices were not under power during the temperature cycling. They were then tested electrically after 500 and 1000 cycles. Additional boards were subjected to power life testing at a specific duty cycle and heatsink temperature.

In order to perform power life tests, the printed circuit boards (PCBs) were assembled to the copper plates. The plates were bolted to fan-cooled, finned aluminum heatsinks with thermal compound on the interface. The assemblies were powered up at an 80% duty cycle for 12,000 cycles representing 1,000 hours of operation. Assembly construction with this device is shown in Figure 1.

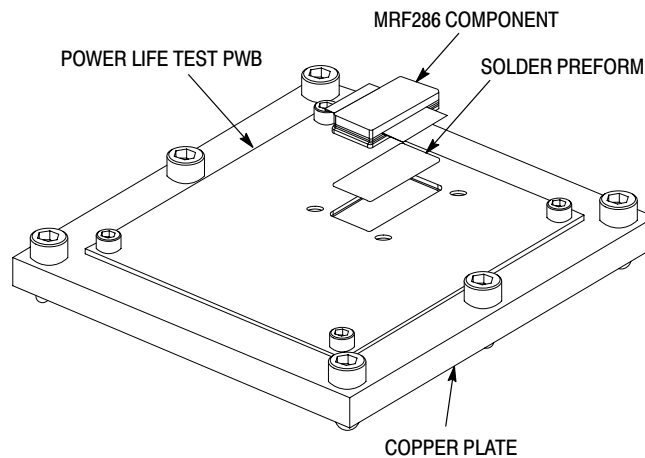


Figure 1. MRF286 60 Watt Power Device

AN1673

MOUNTING METHOD

The completed power life test assembly is shown in Figure 2. As described in the Mounting Method Design section, the assembly consists of the device solder mounted to a printed circuit board, with the base of the part solder mounted to a copper plate. The copper plate is bolted to an aluminum chassis which is then fan-cooled in order to maintain the die junction temperature at approximately 175°C.

A challenging aspect of high volume manufacturing of any component in a board assembly involves the stack up of tolerances of the completed system. Achievable device tolerances for seating plane height of the component are ± 0.005 inches. Achievable tolerances of the printed circuit board are approximately ± 0.007 inches. The tolerances of the copper plate can be kept to ± 0.003 inches in the recessed area where the component will sit. In the assemblies built for power

life test, the recess in the copper plate was machined so that the device leads would be assembled with maximum lead tip deflection of 0.015 inch where the leads attach to the PCB. This was accomplished by utilizing a solder reflow fixture which held the component in place during reflow. The fixture used for this assembly is depicted in Figures 3 and 4. To solder multiple components at one time, a simple fixture can be designed to secure all of the components during the reflow operation. This can be done with several techniques, an array of pins being one example. In the power life test assembly, the varying space tolerance between the backside of the component and the copper plate was filled with solder.

During assembly of the device, the flange is soldered to the copper plate through a slot in the PCB. In the same reflow operation, the leads of the device are soldered to the PCB. All soldering is accomplished in one pass using 62/36/2 Sn/Pb/Ag solder.

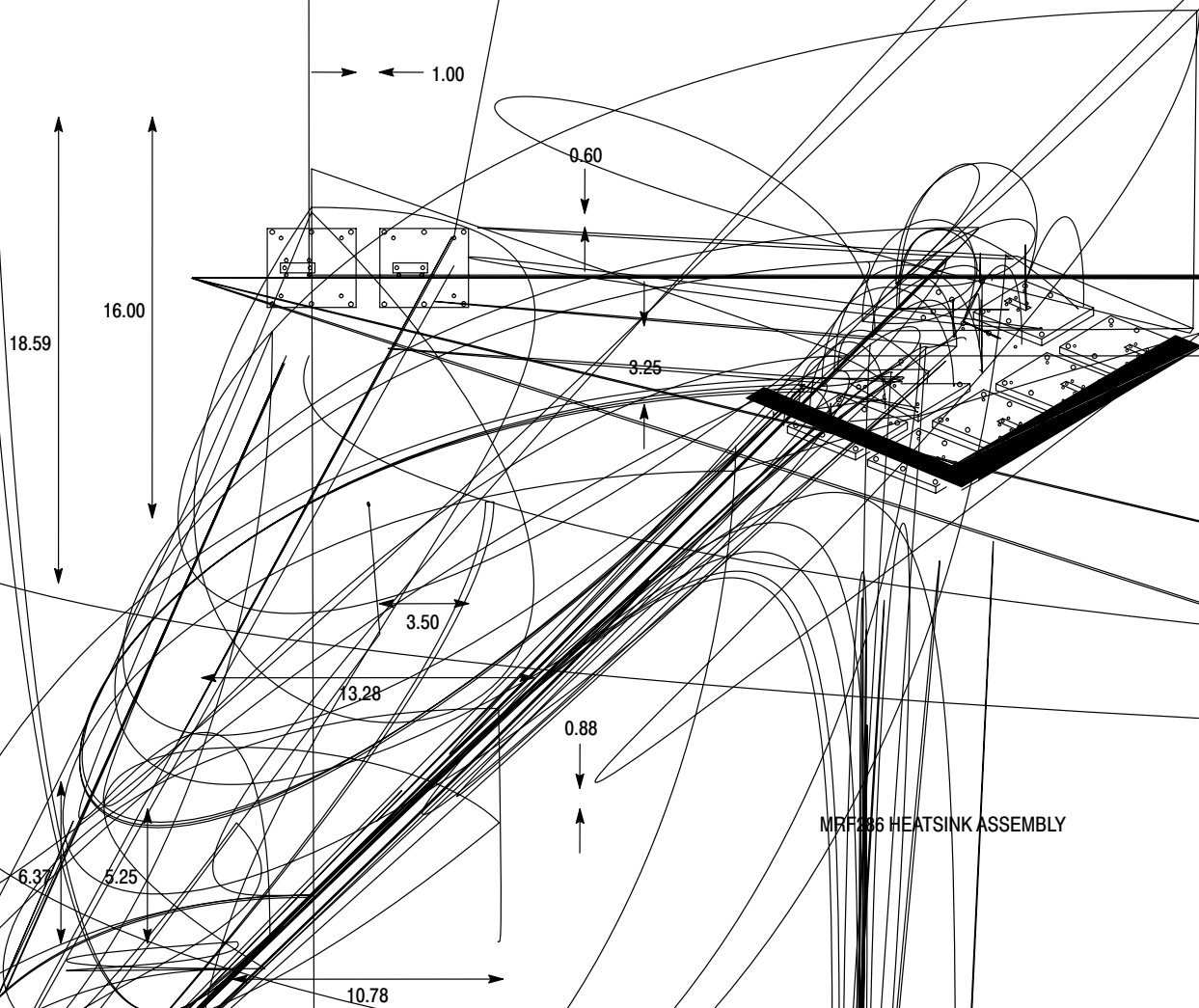


Figure 2. Power Life Test Assembly

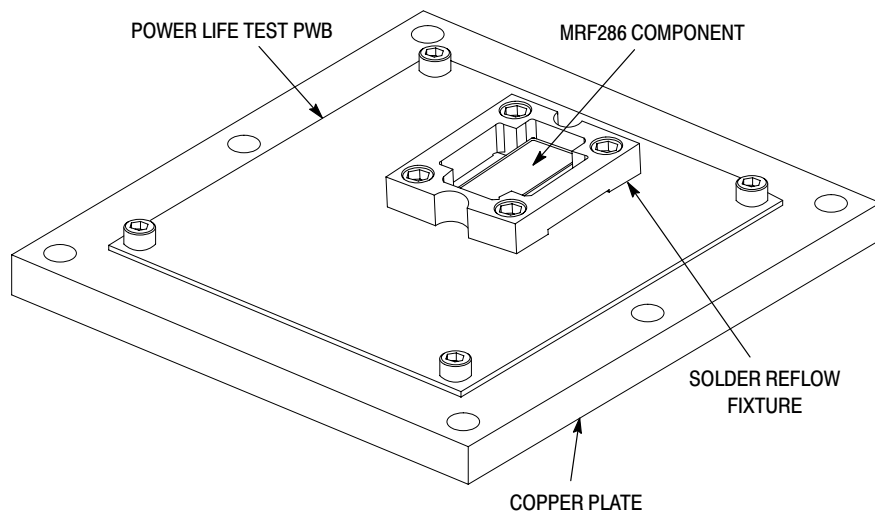


Figure 3. MRF286 Component Assembled with Solder Reflow Fixture

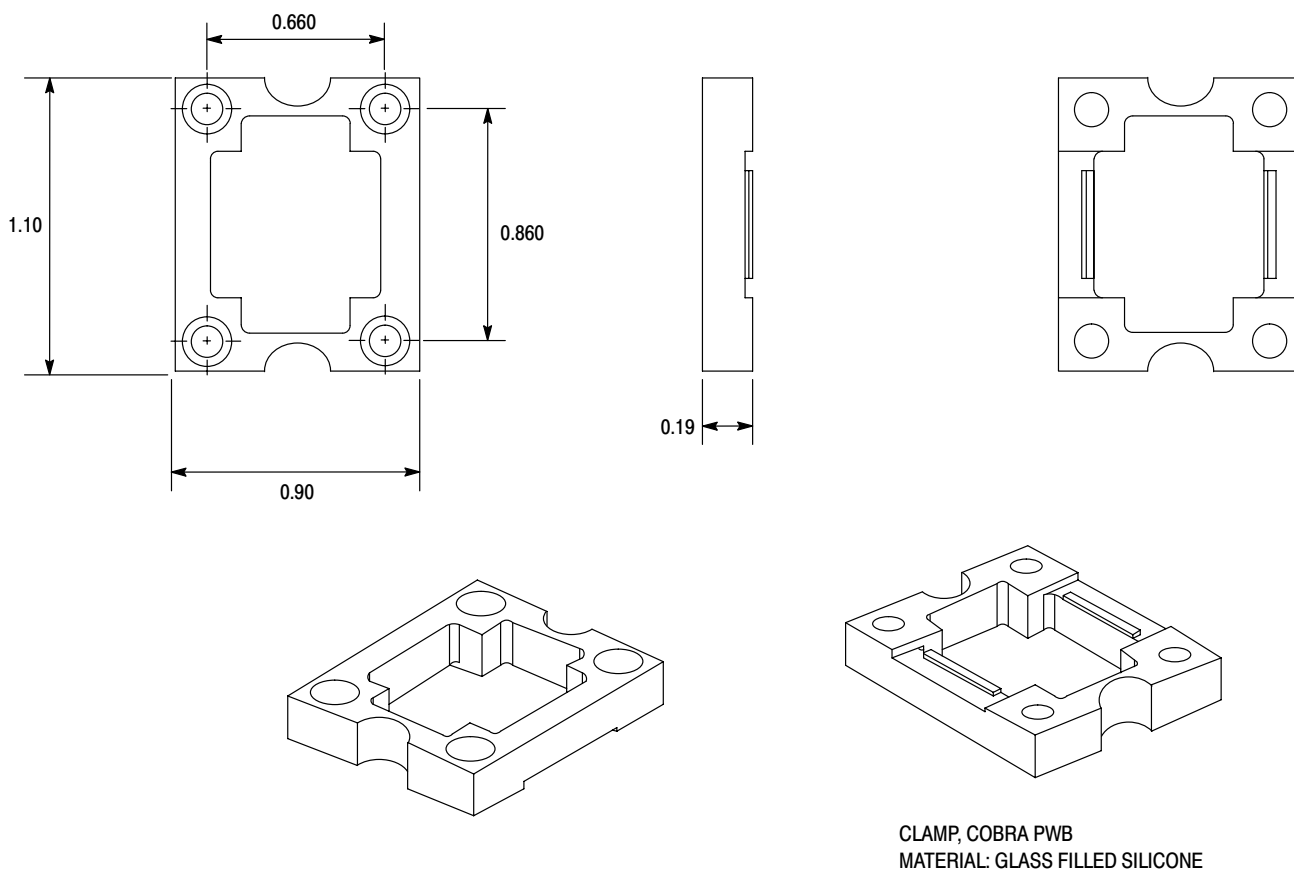


Figure 4. Component Fixture Used for Reflow

AN1673

Prior to proceeding with assembly of the PCB, it is necessary to insure that the level of gold within the solder joint does not exceed 4% by volume. This can be accomplished in a number of ways. Once this was accomplished for our power life test assemblies, the PCB was then screen printed with Sn/Pb/Ag solder paste using a stainless steel stencil, 0.006 inches thick. It was then secured to a copper plate using four #4-40 socket head cap screws. The copper plates were plated with approximately 1,000 to 1,500 microinches of electroless nickel. The plates contain a recessed cavity in which the components were then placed. Prior to placing the component, two .002 inch thick solder preforms were set into the recess. Two drops of no clean flux were placed on the preforms prior to placement of the device. The solder reflow fixture shown in Figure 3 was then fixed in place over the part using four #4-40 screws. Finally, the entire assembly was placed in a BTU convection reflow furnace. In the reflow step, the board is preheated to 150°C and held constant for a minimum of one minute to stabilize the board temperature. Best reflow characteristics are achieved by a "spike" above the 183°C liquidus. Peak temperature of the furnace is at 215°C ±10°C. Maximum time above the liquidus temperature is 90 seconds with 30-60 seconds typical. Maximum time above 150°C is 5.5 minutes. After reflow, the solder reflow fixture was removed by removal of the four screws. The fixture could then be reused. The completed, reflowed board/plate assemblies were screw mounted to the aluminum heatsink after evenly spreading the backside of the copper plate with 0.0005-0.001 inches of thermal compound.

The actual board assembled for power life test is shown in Figure 5.

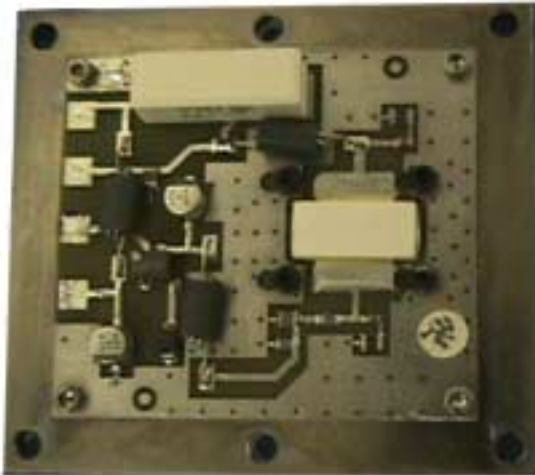


Figure 5. Power Life Test Board

PCB assembly steps are outlined in the following flow assembly.

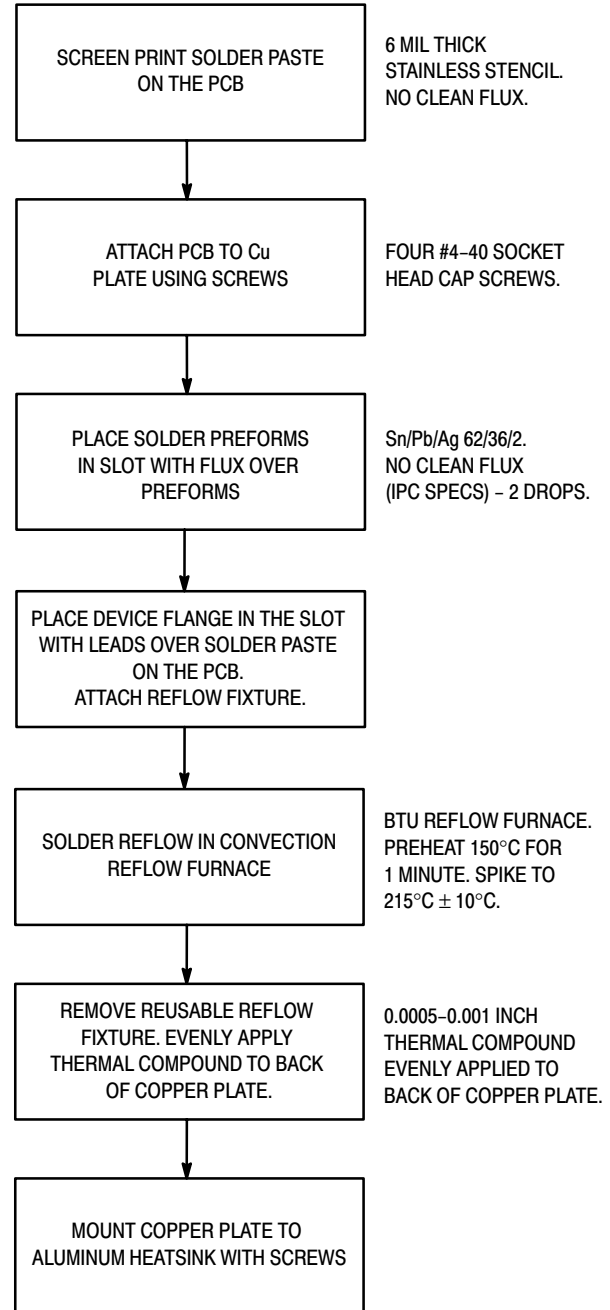



Figure 6. Process Flow for Board Assembly

SUMMARY

Information relating to mechanical analysis, power life testing, and thermal management can be found in the MRF286 Engineering Bulletin, "Thermal Management and Solder Mounting Method for the MRF286, 60 Watt Power Device in a CuW (Copper Tungsten) Base Package." Order this document by EB211/D.

NOTES

NOTES

Motorola reserves the right to make changes without further notice to any products herein. Motorola makes no warranty, representation or guarantee regarding the suitability of its products for any particular purpose, nor does Motorola assume any liability arising out of the application or use of any product or circuit, and specifically disclaims any and all liability, including without limitation consequential or incidental damages. "Typical" parameters which may be provided in Motorola data sheets and/or specifications can and do vary in different applications and actual performance may vary over time. All operating parameters, including "Typicals" must be validated for each customer application by customer's technical experts. Motorola does not convey any license under its patent rights nor the rights of others. Motorola products are not designed, intended, or authorized for use as components in systems intended for surgical implant into the body, or other applications intended to support or sustain life, or for any other application in which the failure of the Motorola product could create a situation where personal injury or death may occur. Should Buyer purchase or use Motorola products for any such unintended or unauthorized application, Buyer shall indemnify and hold Motorola and its officers, employees, subsidiaries, affiliates, and distributors harmless against all claims, costs, damages, and expenses, and reasonable attorney fees arising out of, directly or indirectly, any claim of personal injury or death associated with such unintended or unauthorized use, even if such claim alleges that Motorola was negligent regarding the design or manufacture of the part. Motorola and  are registered trademarks of Motorola, Inc. Motorola, Inc. is an Equal Opportunity/Affirmative Action Employer.

Mfax is a trademark of Motorola, Inc.

How to reach us:

USA/EUROPE/Locations Not Listed: Motorola Literature Distribution;
P.O. Box 5405, Denver, Colorado 80217. 1-303-675-2140 or 1-800-441-2447

JAPAN: Nippon Motorola Ltd.; SPD, Strategic Planning Office, 141,
4-32-1 Nishi-Gotanda, Shinagawa-ku, Tokyo, Japan. 81-3-5487-8488

Customer Focus Center: 1-800-521-6274

Mfax™: RMFAX0@email.sps.mot.com – TOUCHTONE 1-602-244-6609
Motorola Fax Back System – US & Canada ONLY 1-800-774-1848
– <http://sps.motorola.com/mfax/>

ASIA/PACIFIC: Motorola Semiconductors H.K. Ltd.; 8B Tai Ping Industrial Park,
51 Ting Kok Road, Tai Po, N.T., Hong Kong. 852-26629298

HOME PAGE: <http://motorola.com/sps/>



MOTOROLA



AN1673/D