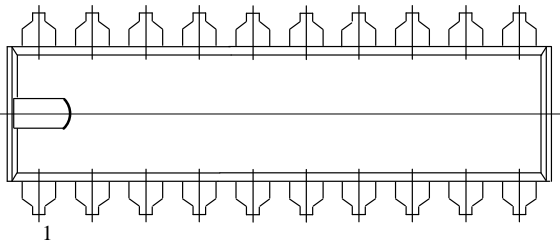
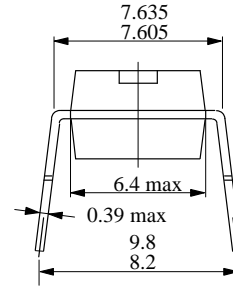
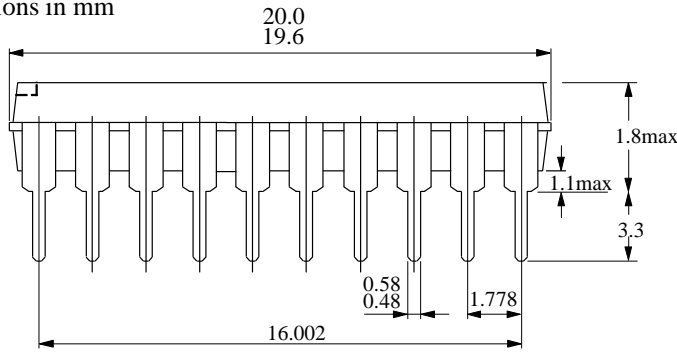
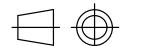


# SDIP-Packages

## Package SDIP20

Dimensions in mm

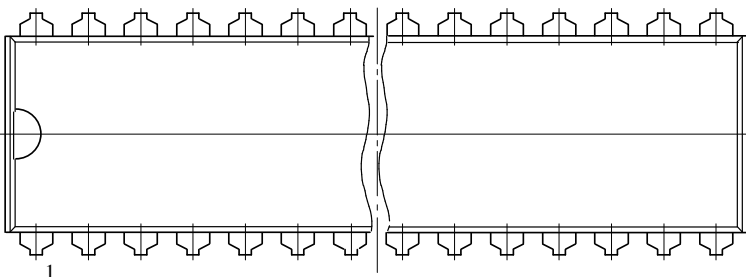
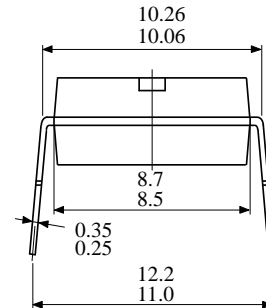
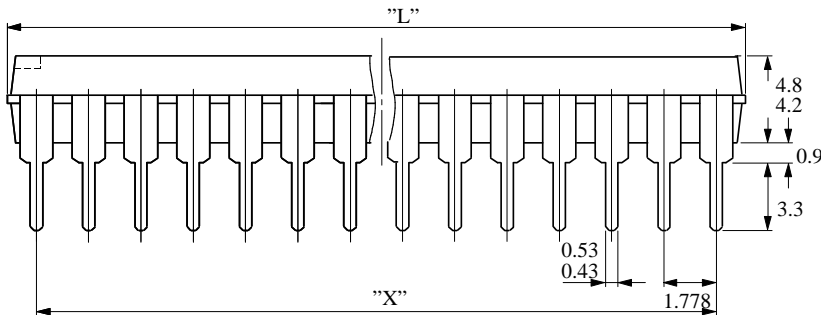


  
technical drawings  
according to DIN  
specifications


13029

## Package SDIP28-30

Dimensions in mm



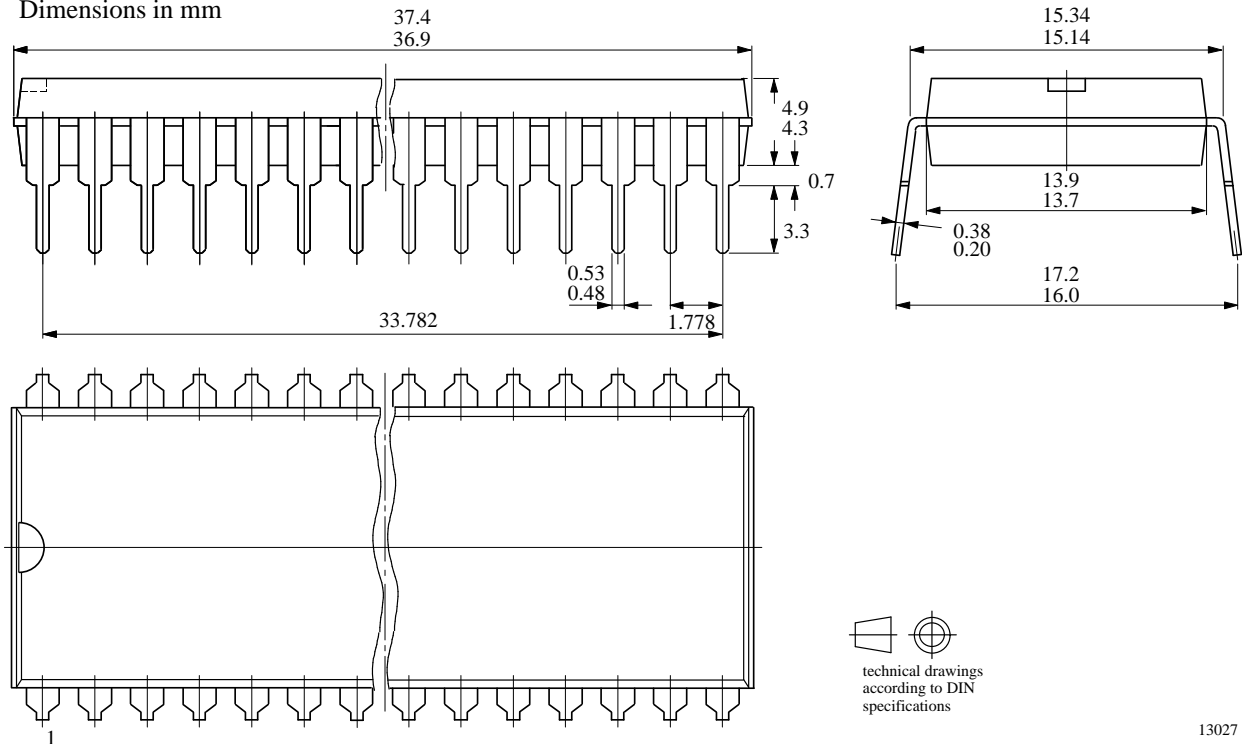
Package	min "L"	max "L"	"X"
SDIP28	27.5	27.1	23.114
SDIP30	27.5	27.1	24.892

  
technical drawings  
according to DIN  
specifications

13028

## Package SDIP40

Dimensions in mm



## Package SDIP52

Dimensions in mm

