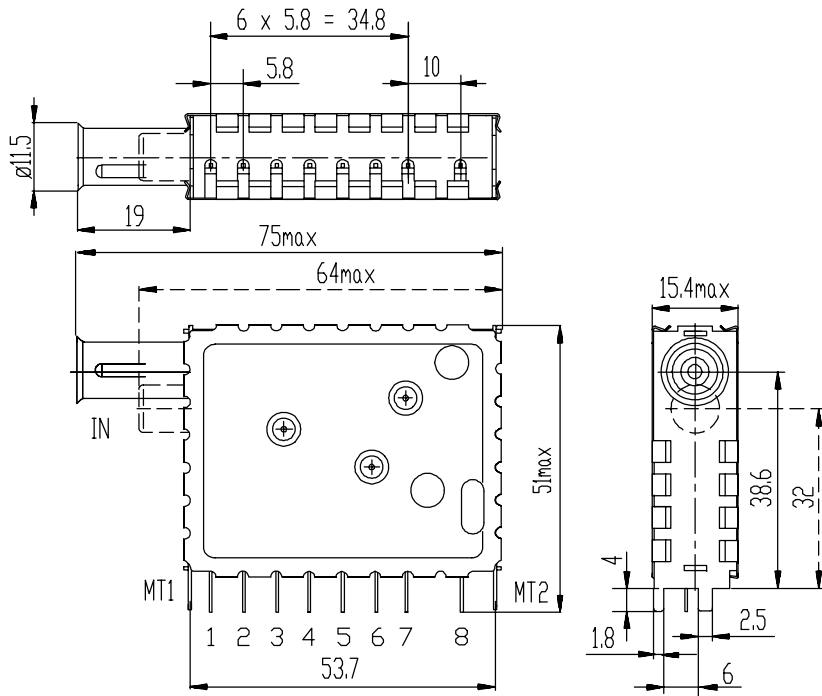


KS-70 series

Mechanical data



Terminal

IN	IEC/phono RF input
1	UHF band supply +12 V
2	Tuning voltage 0.5 to 28 V
3	VHF high band supply +12 V
4	AGC voltage 8 to 0.85 V
5	VHF low band supply +12 V
6	AFT voltage 6.5 V +/- 4.5 V
7	Supply voltage +12 V
8	IF output asymmetrical
MT1	Mounting tab
MT2	grounded

Type	System	Frequency ranges (MHz)	AFT	Antenna connector
KS-V-75 EK	CCIR, B/G	46 to 110 111 to 300 470 to 860	yes	phono
KS-V-75 OK	OIRT, D/K		yes	phono
KS-V-75 OM	OIRT, D/K		no	phono
KS-V-77 EK	CCIR, B/G		yes	IEC
KS-V-77 OK	OIRT, D/K		yes	IEC
KS-V-77 OM	OIRT, D/K		no	IEC

Note: these tuners comply with the requirements of radiation, signal handling capability and immunity from radiated interference of European standard EN55013 and EN55020, when installed professionally in an adequate TV receiver.