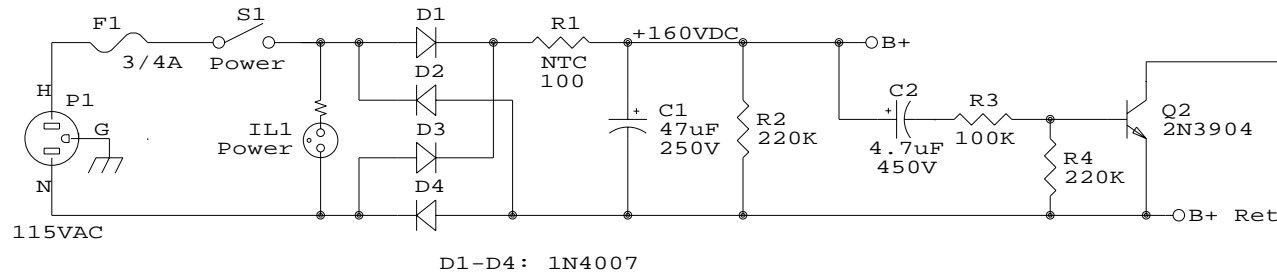
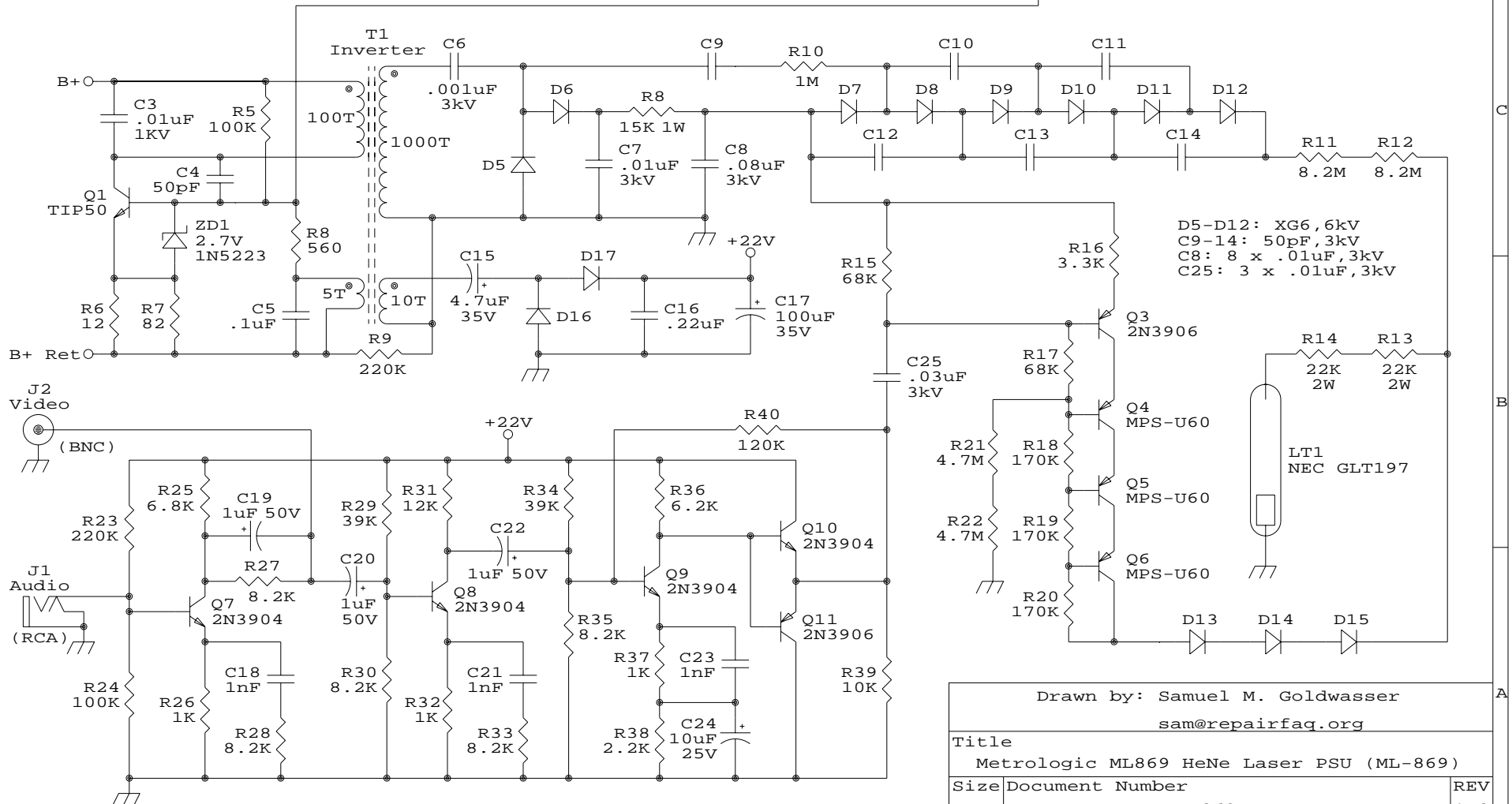


# Metrologic ML869 HeNe Laser PSU (ML-869)



## Notes:

1. Part designations are arbitrary. PCB unmarked.
2. Resistors are 1/2W unless otherwise noted.
3. T1 number of turns guessed.



Drawn by: Samuel M. Goldwasser

sam@repairfaq.org

Title		
Metrologic ML869 HeNe Laser PSU (ML-869)		
Size	Document Number	REV
A	ML-869-SCH	1.0
Date:	July 25, 2000	Sheet 1 of 1